

OPERATING INSTRUCTIONS

- ⇒ Set the unit on a flat and level surface.
- ⇒ Connect the power lead to a properly grounded 3 pin outlet.
- ⇒ Ensure that there are no obstructions to prevent rotation of the rollers.
- ⇒ Load the tubes end to end between the rollers (maximum of 1 kg each row).
- ⇒ Switch on the power and adjust to the required speed.
- ⇒ The mixer can operate for long periods unattended if required.

This Roller Mixer is designed to carry blood tubes or small containers. Use with larger containers could overload the drive system and cause damage.

Never try to force the rollers around by hand, or carry the unit by the rollers.

Unauthorised tampering will invalidate the manufacturer's guarantee

SPECIFICATIONS

Power requirements:	240v AC 5 watt
Motor:	12volt DC geared motor
Speed control:	Solid state analogue control
Speed range:	10-60 rpm variable
Drive:	Chain and sprocket.
Roller size:	Ø33 x 320mm long
Roller type:	Epoxy coated aluminium with stainless steel drive shaft.
Capacity:	1kg each pair of rollers
Operating conditions:	Temperature 0° to 45°c Humidity max 80% RH (non condensing)

MAINTENANCE

Regular cleaning is the only maintenance required.

SERVICE

Should the unit fail to operate correctly, any service work should be carried out by a qualified technician.

PRODUCT WARRANTY

Ratek equipment is covered by a 12 month parts and labour warranty effective from the date of purchase.

This warranty covers the repair or replacement of any parts or components found to be defective, subject to the service options listed below.

This warranty excludes any defect resulting from misuse, neglect, accidental damage, improper voltage, or any alteration which affects the performance of the equipment.

- Does not extend to any costs associated with delivery, damage, or loss incurred during transport.
- Is in addition to any Statutory regulations and provisions implied by the Trade Practices Act and any relevant State or Federal Government obligations.

For warranty service the following options are available:

- Contact the supplier from where the equipment was purchased to arrange for service.
- Return the equipment direct to Ratek Instruments, 60 Wadhurst Drive, Boronia, Vic 3155.

Warranty repairs not returned to Ratek can be undertaken by authorised service personnel but are limited to a parts only warranty.

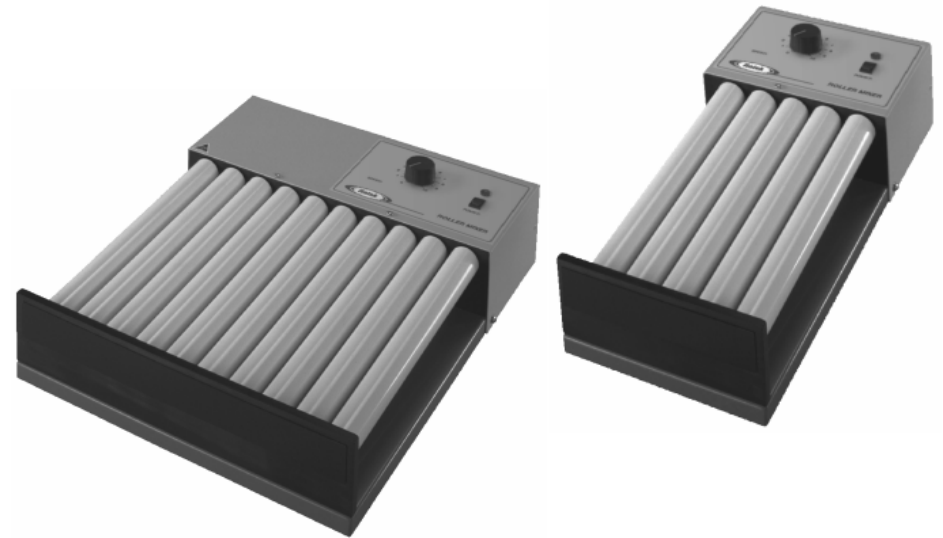
Note: Proof of purchase is required for all warranty repairs.



OPERATING INSTRUCTIONS

FOR

BTR5/10 BLOOD TUBE ROLLER MIXERS



FOR ADDITIONAL INFORMATION / TECHNICAL SUPPORT

TEL: 61 3 98872161

FAX: 61 3 98872163

EMAIL: sales@ratek.com.au