

## OPERATING INSTRUCTIONS

### INSTRUCTIONS FOR USE

- ⇒ Set the waterbath on a firm and flat surface
- ⇒ Fill the bath with clean water to the desired level, (at least cover the element).
- ⇒ Plug into a properly grounded mains outlet.
- ⇒ Press the power switch on the front panel to turn the unit on.
- ⇒ Select the temperature required using the front panel knob.

The element indicator will remain on until just before the set temperature is reached, at which point it will begin to alternate on and off, signifying that proportional control is in operation.

For critical applications allow the bath to stabilise (approx 30 mins), then check the bath temperature with a reference thermometer.

Adjust the temperature control to achieve the required temperature.

Once the desired temperature is set and stabilized it will be automatically maintained.

### NOTE

Various factors will influence the amount of time it takes for bath temperature to stabilise but generally 30 minutes should be allowed where critical control is important.

The difference between ambient and water temperature has the most influence on control stability.

Use of a lid over the bath will not only prevent water loss through evaporation, but will greatly improve control stability.

### CAUTION !

An insufficient water level (the heating element needs to be covered) will cause the safety switch to cut power to the unit.

If the cut out switch operates:

- ⇒ Turn off the power and put sufficient water in the bath to at least cover the element.
- ⇒ Push in the reset button located under the waterbath behind the control panel.
- ⇒ Top up the tank to the desired level and turn on the power.

The waterbath should continue to operate normally, if not seek technical assistance.

## SPECIFICATIONS

Control type:	Phase controller using custom programmed microcontroller			
Temperature Sensor:	Thermistor			
Temperature range:	Ambient+5° to 100°C min 28°C			
Control stability:	± 0.5			
Safety:	Manual reset over temperature cut out			

	WB4	WB7	WB14	WB20
Power 240vac:-watts	500	1000	1000	1500
Capacity:-litres	4	7	14	20

### MAINTENANCE

Regular cleaning is the only maintenance required.

The water tank is made of stainless steel, and is designed for use with clean tap water.

Daily emptying and replenishment with clean water will prevent the build up of scale and corrosive sediment.

Use of a mild detergent and a fresh water rinse occasionally will be sufficient to maintain the tank in as new condition.

Many cleaning solutions contain chlorine or chlorine compounds that can severely damage an element, and their use should be avoided. Acids will also attack the element surface

### SERVICE

Should the unit fail to operate correctly, any service work should be carried out by a qualified technician.

Unauthorised tampering will invalidate the manufacturer's guarantee

## PRODUCT WARRANTY

Ratek equipment is covered by a 12 month parts and labour warranty effective from the date of purchase.

This warranty covers the repair or replacement of any parts or components found to be defective, subject to the service options listed below.

This warranty excludes any defect resulting from misuse, neglect, accidental damage, improper voltage, or any alteration which affects the performance of the equipment.

- Does not extend to any costs associated with delivery, damage, or loss incurred during transport.
- Is in addition to any Statutory regulations and provisions implied by the Trade Practices Act and any relevant State or Federal Government obligations.

For warranty service the following options are available:

- Contact the supplier from where the equipment was purchased to arrange for service.
- Return the equipment direct to Ratek Instruments, 60 Wadhurst Drive, Boronia, Vic 3155.

Warranty repairs not returned to Ratek can be undertaken by authorised service personnel but are limited to a parts only warranty.

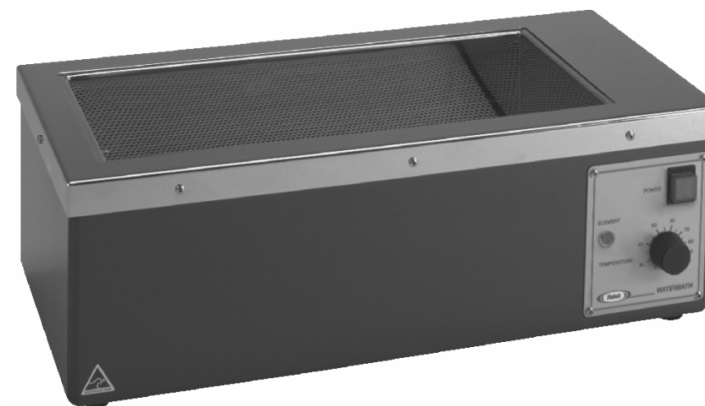
**Note:** Proof of purchase is required for all warranty repairs.



## OPERATING INSTRUCTIONS

FOR

WB series WATERBATHS



FOR ADDITIONAL INFORMATION / TECHNICAL SUPPORT

TEL: 61 3 98872161

FAX: 61 3 98872163

EMAIL: [sales@ratek.com.au](mailto:sales@ratek.com.au)